



USER MANUAL (ET16 Plus)



FCC STATEMENT

1. This device complies with Part 15 of the FCC Rules. Operation is subject to the following two conditions:

(1) This device may not cause harmful interference.

(2) This device must accept any interference received, including interference that may cause undesired operation.

2. Changes or modifications not expressly approved by the party responsible for compliance could void the user's authority to operate the equipment.

NOTE: This equipment has been tested and found to comply with the limits for a Class B digital device, pursuant to Part 15 of the FCC Rules. These limits are designed to provide reasonable protection against harmful interference in a residential installation.

This equipment generates uses and can radiate radio frequency energy and, if not installed and used in accordance with the instructions, may cause harmful interference to radio communications. However, there is no guarantee that interference will not occur in a particular installation. If this equipment does cause harmful interference to radio or television reception, which can be determined by turning the equipment off and on, the user is encouraged to try to correct the interference by one or more of the following measures:

- Reorient or relocate the receiving antenna.
- Increase the separation between the equipment and receiver.
- Connect the equipment into an outlet on a circuit different from that to which the receiver is connected.
- Consult the dealer or an experienced radio/TV technician for help.

FCC Radiation Exposure Statement

This equipment complies with FCC radiation exposure limits set forth for an uncontrolled environment. This equipment should be installed and operated with minimum distance 20cm between the radiator & your body.

 The symbol indicates DC voltage.



RECYCLING: This product bears the selective sorting symbol for Waste electrical and electronic equipment (WEEE). This means that this product must be handled pursuant to European directive 2012/19/EU in order to be recycled or dismantled to minimize its impact on the environment.

Contents

Chapter I Operation Guidelines

1.1 Scanning Preparation	2
1.2 When Open the Software	2
1.3 When Scanning	3
1.3.1 Four Processing Methods	3
1.3.2 Five Color Modes	8
1.3.3 Other Functions	8
1.4 After Scan	9
1.4.1 Export Function	9
1.4.2 Batch Function	9
1.4.3 Auxiliary Correction	10
1.5 Visual Presenter	11

Chapter II Introduction

2.1 Product Dimensions	11
2.2 Product Appearance	12
2.3 Product Specifications	14
2.4 Packaging and Accessories	14

Chapter III Terms of Service

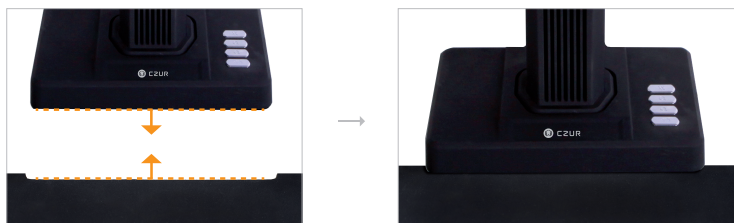
3.1 After Sale Service and Guarantee	15
3.2 Contact Information	16



Chapter I Operation Guidelines

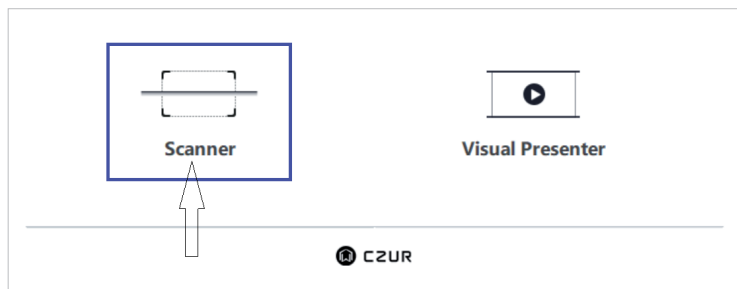
1.1 Scanning Preparation

Set up the scanner, and make sure the black document pad is placed like the picture below. Check the LCD and ensure the black document pad covers the entire screen without showing its edges.



1.2 When Open the Software

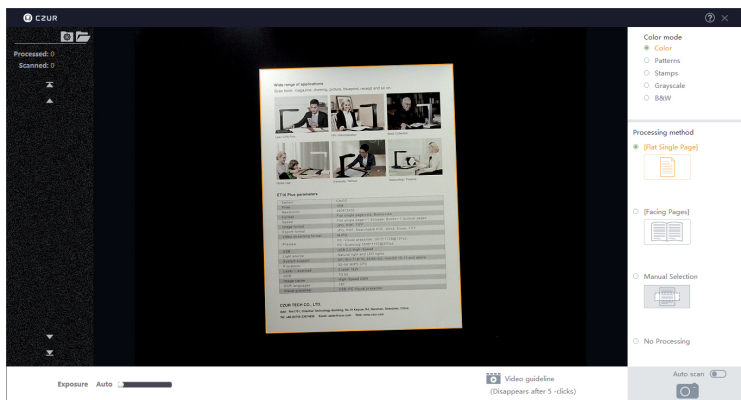
Open page:



Scanner: to scan books/docs

Visual Presenter: to record videos while TFT screen can display

1.3 When Scanning:



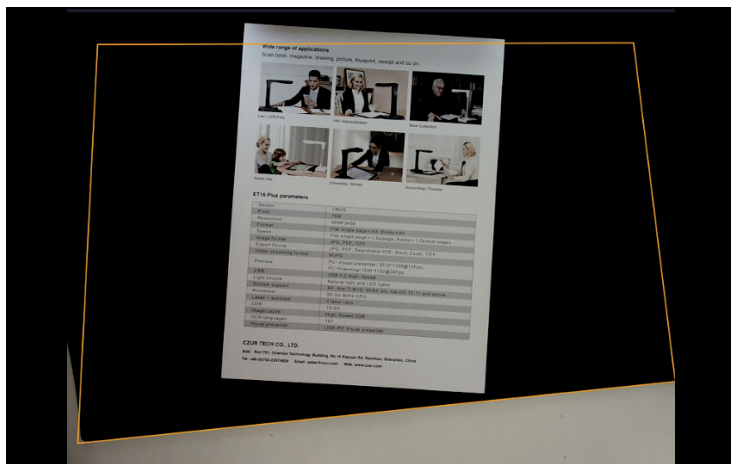
1.3.1 Four Processing Methods

1. Flat Single Page: to scan unbounded non-curvature documents

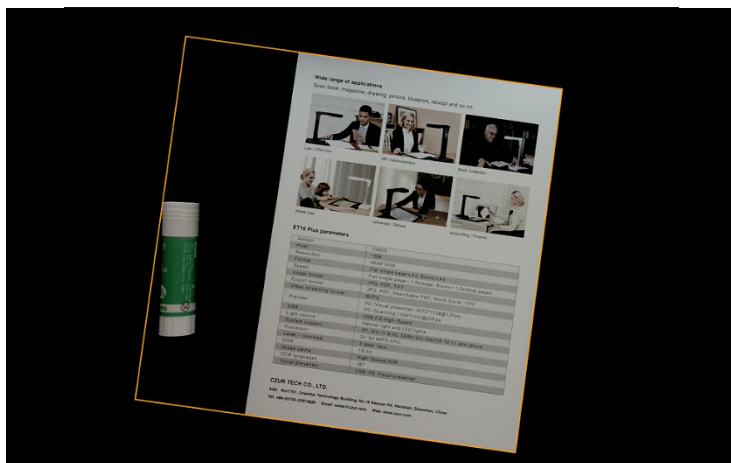
- The area within the yellowish line is what the after-scan JPG looks like. The lines can automatically adapt to the shape of the document.
- The software can auto crop the unnecessary outside of the yellowish line.
- The software can auto correct the book center even if the book is not placed horizontally.

Note: the following incorrect operation might result in a less satisfying scanning result:

- When the black document pad doesn't properly cover the full screen.



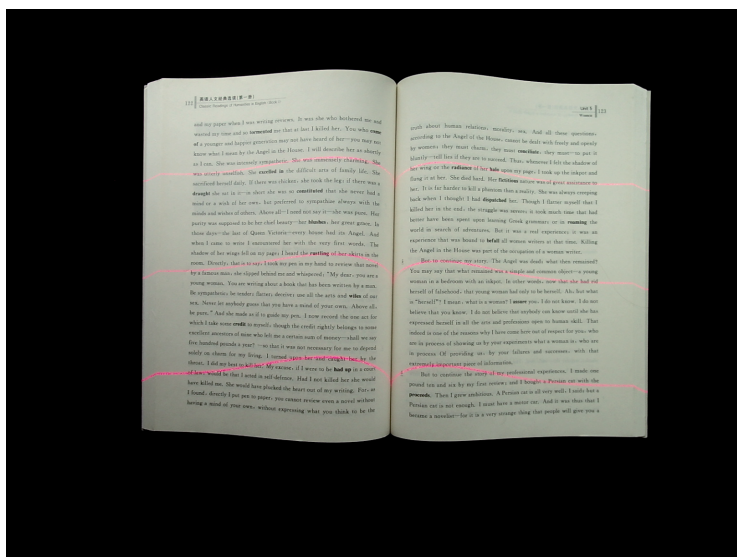
When the other irrelevant objects are on the black document pad.



- When the software is in flat single page mode, there is no auto curve-straightening function applied.

2. Facing Pages: to scan bounded books with curvature

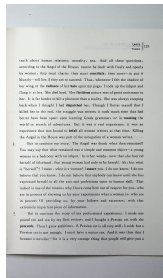
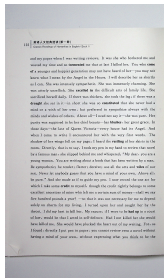
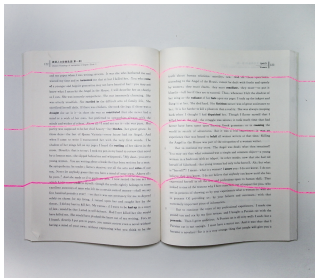
- Books must be placed under where the three red lasers are (see picture below). The length of the book must be more than 12cm.



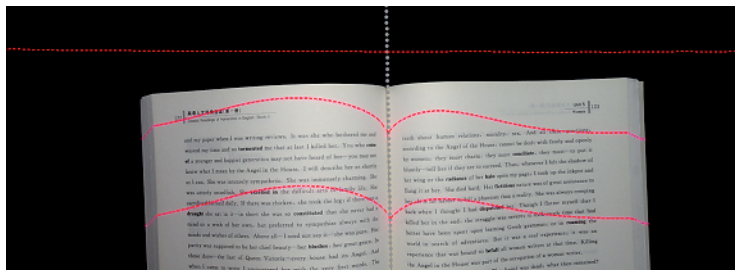
- Can scan the next page when the three lasers line disappear or when you hear the hint tone

Note: the following incorrect operation might result in a less satisfying scanning result:

Not using the black document pad.



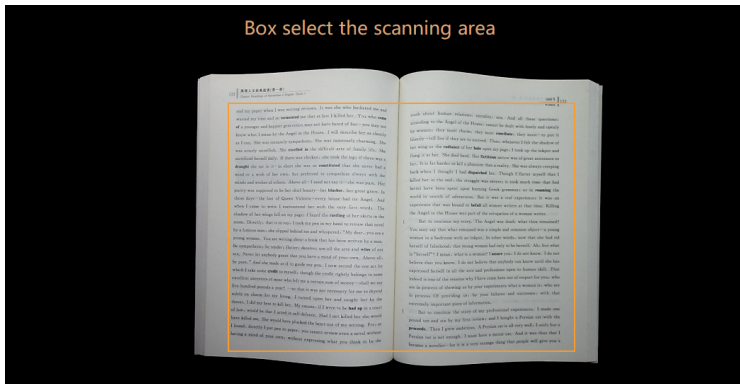
- Not all the three lasers are on the books.



3. Manual Selection: to manually select the specific area which needs to be scanned.

Note: there is no auto curve-straightening technology used here

Box select the scanning area



before

and my paper when I was writing reviews. It was she who bothered me and wasted my time and so **tormented** me that at last I killed her. You who **come** of a younger and happier generation may not have heard of her—you may not know what I mean by the Angel in the House. I will describe her as shortly as I can. She was intensely sympathetic. She was immensely charming. She was utterly unselfish. She **excelled** in the difficult arts of family life. She sacrificed herself daily. If there was chicken, she took the leg; if there was a **draught** she sat in it—in short she was so **constituted** that she never had a mind or a wish of her own, but preferred to sympathize always with the minds and wishes of others. Above all—I need not say this—she was pure. Her purity was supposed to be her chief beauty—her **blushes**, her great grace. In those days—the last of Queen Victoria—every house had its Angel. And when I came to write I encountered her with the very first words. The shadow of her wings fell on my page; I heard the **rustling** of her skirts in the room. Directly, that is to say, I took my pen in my hand to review that novel by a famous man, she slipped behind me and whispered: "My dear, you are a young woman. You are writing about a book that has been written by a man. Be sympathetic; be tender; flatter; deceive; use all the arts and **wiles** of our sex. Never let anybody guess that you have a mind of your own. Above all, be pure." And she made as if to guide my pen. I now record the one act for which I take some **credit** to myself, though the credit rightly belongs to some excellent ancestors of mine who left me a certain sum of money—shall we say five hundred pounds a year?—so that it was not necessary for me to depend solely on charm for my living. I turned upon her and caught her by the throat. I did my best to kill her. My excuse, if I were to be **had up** in a court of law, would be that I acted in self-defence. Had I not killed her she would have killed me. She would have plucked the heart out of my writing. For, as I found, directly I put pen to paper, you cannot review even a novel without having a mind of your own, without expressing what you think to be the

truth about human relations, morality, sex. And all these questions, according to the Angel of the House, cannot be dealt with freely and openly by women; they must **charm**; they must **concoct**, they must—to put it bluntly—tell lies if they are to succeed. Thus, whenever I felt the shadow of her wing or the **radiance** of her **halo** upon my page, I took up the inkpot and flung it at her. She died hard. Her **fictitious** nature was of great assistance to her. It is far harder to kill a phantom than a reality. She was always creeping back when I thought I had **dispatched** her. Though I flatter myself that I killed her in the end, the struggle was severe; it took much time that had better have been spent upon learning Greek grammar; or in **roaming** the world in search of adventures. But it was a real experience; it was an experience that was bound to **befall** all women writers at that time. Killing the Angel in the House was part of the occupation of a woman writer.

But to continue my story. The Angel was dead; what then remained? You may say that what remained was a simple and common object—a young woman in a bedroom with an inkpot. In other words, now that she had rid herself of falsehood, that young woman had to be herself. Ah, but what is "herself"? I mean, what is a woman? I **assure** you. I do not know. I do not believe that you know. I do not believe that anybody can know what she has expressed herself in all the arts and professions open to human skill. That indeed is one of the reasons why I have come here out of respect for you, who are in process of showing us by your experiments what a woman is, who are in process Of providing us, by your failures and successes, with that extremely important piece of information.

But to continue the story of my professional experiences. I made one pound ten and six by my first reviews and I bought a Persian cat with the **proceeds**. Then I grew ambitious. A Persian cat is all very well, I said; but a Persian cat is not enough. I must have a motor car. And it was thus that I became a novelist—for it is a very strange thing that people will give you a

after



4. No processing: to take a picture of the object and present the object as what it is.

1.3.2 Five Color Modes

1. Color: for docs with colors.
2. Patterns: for ID card. It maintains the background pattern of ID card or passport.
3. Stamps: for docs with stamps on. This color mode can maintain the color of the stamps (only in blue).
4. Grayscale: for engineering to draw. This mode can make the lines clearer.
5. B&W: only in black and white. For books and docs with mainly words.

1.3.3 Other Functions:

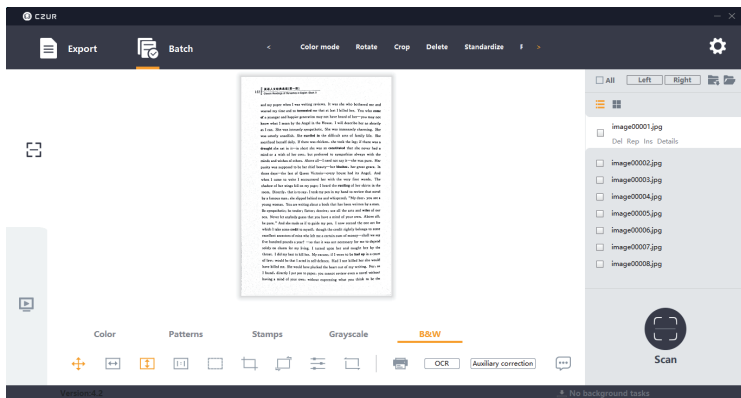
Exposure Auto

Hint tone

Video guideline
(Disappears after 4 -clicks)

1. Auto scan: when it is on, the algorithm will detect when pages are turned.
2. Exposure: to adjust the camera exposure.
3. Hint tone: Audible Bell

1.4 After Scan



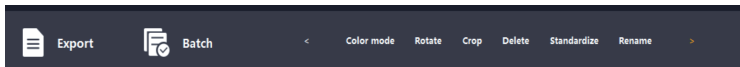
1.4.1 Export Function: to export selected/all images to TIFF, WORD, PDF, Searchable PDF and Excel.



Note:

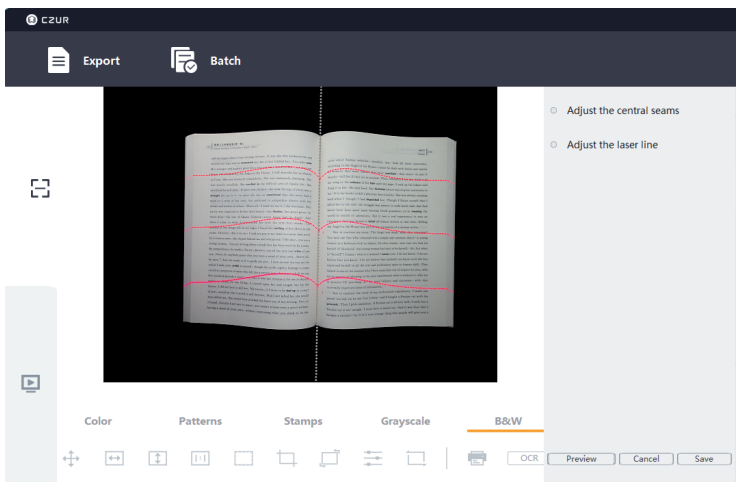
If converted to Word, the background color of the pages need to be white and clean without special characters. Otherwise the OCR might not be able to recognize the words properly.

1.4.2 Batch Function: to edit images in batch.



1. Standardize: To change the size, DPI (from 72 to 350), color (background color) and alignment of the selected images.
2. Quality: adjust the contrast, sharpness and thickness of the images.

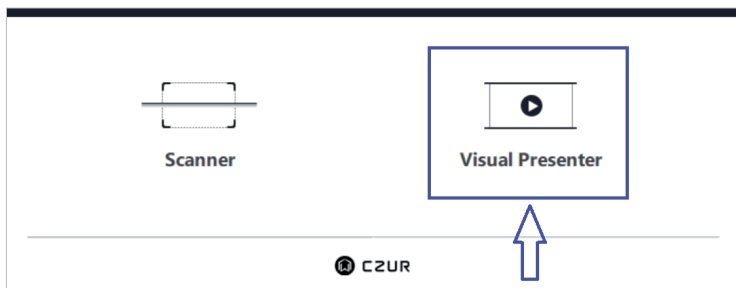
1.4.3 Auxiliary Correction: to show what the docs look like when scanning with three laser lines.



1. Adjust the central seams: to edit a photo; Adjust the white line and the software crops the photo according to the new white line.
2. Adjust the laser line: to edit a photo; Adjust the laser lines to the indicated laser lines on the picture.



1.5 Visual Presenter



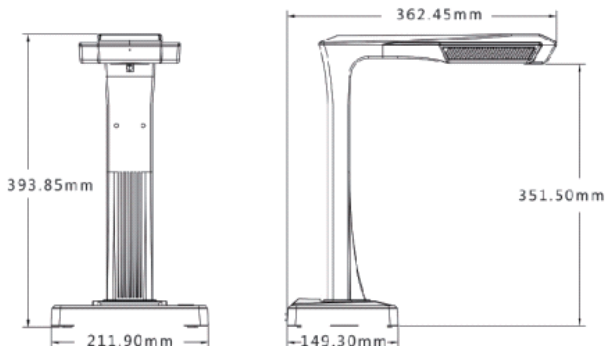
Please see the video:

<https://www.youtube.com/watch?v=dE1jAfesPUU>

<https://www.youtube.com/watch?v=072h9INK2Ys> (from 29mins to the end)

Chapter II Introduction

2.1 Product Dimensions



2.2 Product Appearance



CZUR Scanner



LCD



Connection Ports



Top Casing



Hand Button



Foot Pedal



Side Lights Port



Side Lights Touch Button



1. Microphone
2. Base
3. Top casing
4. Laser light
5. Vertical bar
6. LED brightness(high/low)
7. Scan(start next scan)
8. LCD (see LCD Notes below)
9. Video record indicator light
Blinking green lights= Recording in progress.
Green light off = Video record has been stopped.
10. Scan indicator light
11. Power indicator light (White)
12. HD CMOS camera
13. Bank of LED lights
14. Bank of LED lights
15. Power on/off switch
16. DC 9V 2A,AC volt 100-240V 50/60Hz
17. To USB cable for computer connection
18. USB port for Foot Pedal or Hand Button
19. Reset button (see Reset Button Notes below)
20. Hand button light "Scan in progress"
21. Hand button (to start next scan)
22. Foot pedal cover
23. Foot pedal base
24. Side lights port
25. Side lights touch button

LCD Notes

- LCD= Liquid Crystal Display, a type of flat-panel display screen.
- When connected to a PC, displays if uploading or not to the PC.

Reset Button Notes

- Short Press = Retry Connection.
- Long Press (hold for 6 seconds) = Reset.



2.3 Product Specifications

Type	Model	ET16 Plus
Basic characteristics	Pixel	16M
	Resolution	4608*3456
	Scanning speed	≈1.5S
	Format	≤A3
	Video format	MJPEG
	Picture format	JPG
	Export format	PDF/TIFF/WORD/EXCEL/Searchable PDF
Configuration parameters	Processor	32 MIPS CPU
	DDR	1Gbit
	Laser rays	3 laser rays
	LCD	√
	MIC	√
Specific functions	Smart scan	√
	OCR	√
	SDK	√
	Software function	Flattening Curve, Finger removal, smart paging, Smart tilt corrections and auto-cropping, auto-scan.
	Operating systems supported	XP/Win7/Win8/Win10, 32bit/64bit; macOS 10.11 and above

2.4 Packaging and Accessories

Item	Specification	Amount (pcs)
Scanner	CZUR smart scanner	1
Side lights	Magnetic connector	1
Hand button	USB interface, 1.2M	1
Foot pedal	USB interface, 2.0M	1
USB cable	USB interface, 1.5M	1
AC/DC power adapter	Input AC: 100-240V-50/60HZ 0.6A output DC: 9V/2A	1
Black document pad	530*401*2.0MM	1
Specialized finger cots	Left hand; Right hand	2
CD-ROM	CD-R, D=120MM	1
User manual	Color printing, 126*178MM	1



Chapter III Terms of Service

3.1 After Sale Service and Guarantee

- All after sales policy of this product shall be subject to the laws and regulations of the country of sales.
- The scope of warranty covers the scanner device, the adapter, the hand button, and the foot pedal. Consumables and external appearances are not covered by the warranty.
- When sending in the product for repairs, please contact us or our local agent.
- We apologize for not issuing notices for subsequent upgrades or version updates of the product. This Company reserves the right of final decision on the interpretation of the above articles.

Warranty scope exception:

- This product may only be used in areas where surrounding temperature is less than 40 °C.
- Failures or damages caused by incorrect installation or using the product in environments that exceed the specified work conditions (for examples, in places that are too hot or too humid).
- Damages caused by using components not from this Company or when the user attempts to replace components by himself / herself.
- Damages caused by natural disasters, accidents, or human factors.
- Damages caused by inappropriate storage (including damages caused by rats or liquid infiltration) .
- Failures or damages caused by unauthorized repairs, modifications, or abuse carried out by the user.



- Damages caused by repairs carried out by unauthorized repair centers.
- Other errors and failures caused by software installation or software settings, or problems and failures caused by computer viruses.

3.2 Contact Information

Get technical support and information by following ways.

CZUR TECH CO., LTD.

Website: <http://www.czur.com/>

E-mail: support@czur.com

Skype: [support@czur.com](https://www.skype.com/people/support@czur.com)

Room 1701, Oriental Science and Technology Building, No.16, Keyuan Road, Nanshan District, Shenzhen, China.

Room 911, Building A, Chuangye Mansion, 32th Huoju Road, High-tech District, Dalian, China.

CZUR TECH CO., LTD.

Website: <http://www.czur.com>

E-mail: support@czur.com

Skype: support@czur.com

Room 1701, Oriental Science and Technology Building, No.16, Keyuan Road, Nanshan District, Shenzhen, China.