



Instruction Manual for Firmware Upgrade Tool



Introduction

This manual is formulated to help you make better use of the product and experience the upgrade of the product. Before upgrading the product, please read this manual to learn about how to upgrade the firmware with the upgrade tool via PC.

Purpose

The purpose of this manual is to tell you how to download and install the upgrade tool via PC and upgrade the firmware of CZUR Mirror.

Statement

All parts of this manual, including the text, figures, and graphics belong to CZUR TECH CO., LTD. Any individual or organization is not allowed to copy any part of this document in any way without the written consent of CZUR TECH CO., LTD.

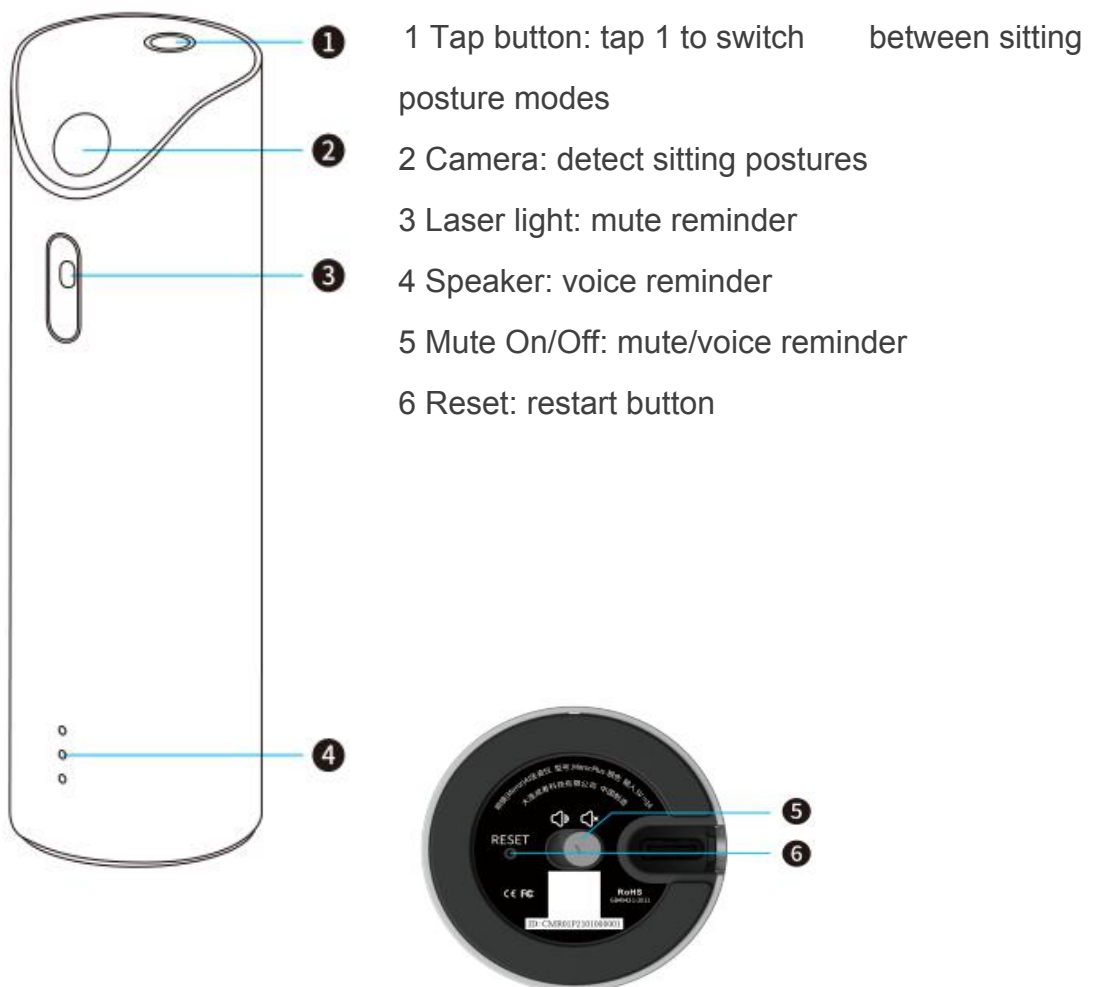
The manual will be updated from time to time. If you cannot solve a problem according to the instructions in this manual, please call our customer service for help.

Contents

Part I Overview.....	1
1. Descriptions of Buttons and Indicators of Device.....	1
Part II Function Introduction.....	2
1. Tool Download.....	2
2. Tool Installation.....	2
3. Firmware Upgrade.....	7
Part III FAQ.....	11

Part I Overview

1. Descriptions of Buttons and Indicators of Device



Part II Function Introduction

1. Tool Download

Step 1: Go to the official website of CZUR.

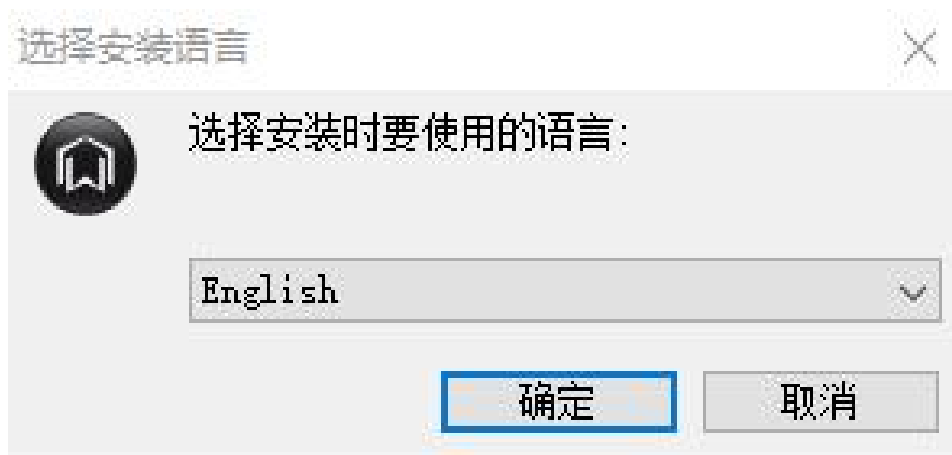
1. Go to <https://www.czur.com/cn/support> on a PC browser, and download the PC upgrade tool.

2. Tool Installation

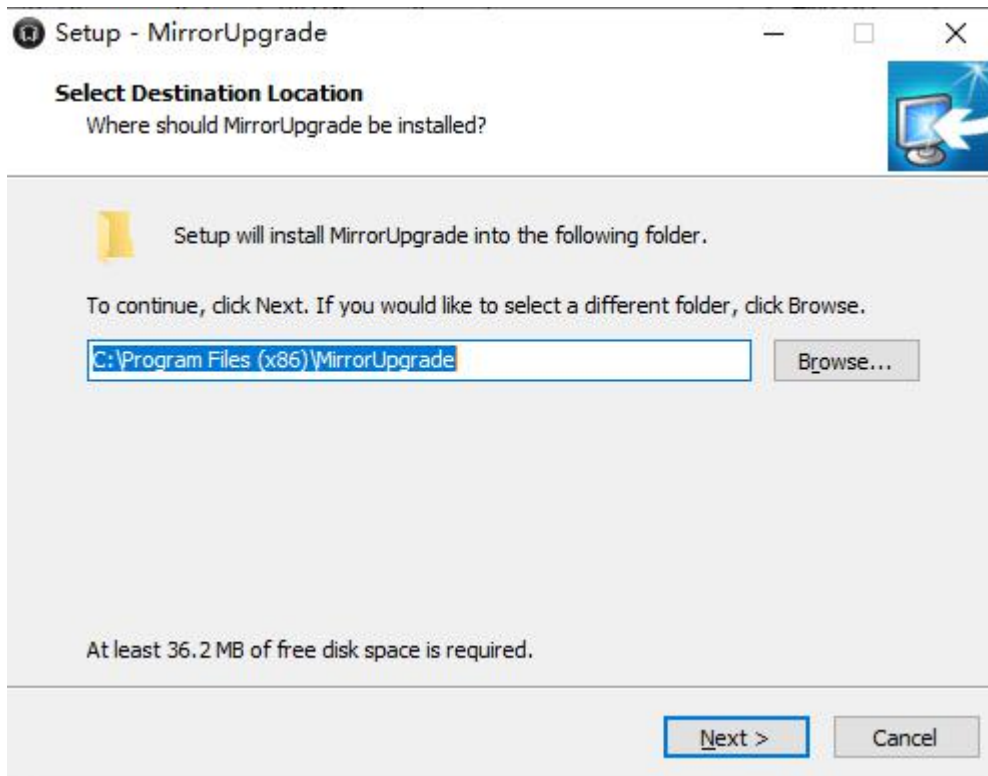
- 1) Double-click the downloaded XXX.exe to run the installation package.

Enter the installation wizard of the upgrade tool software and select the language you want to use during the installation.

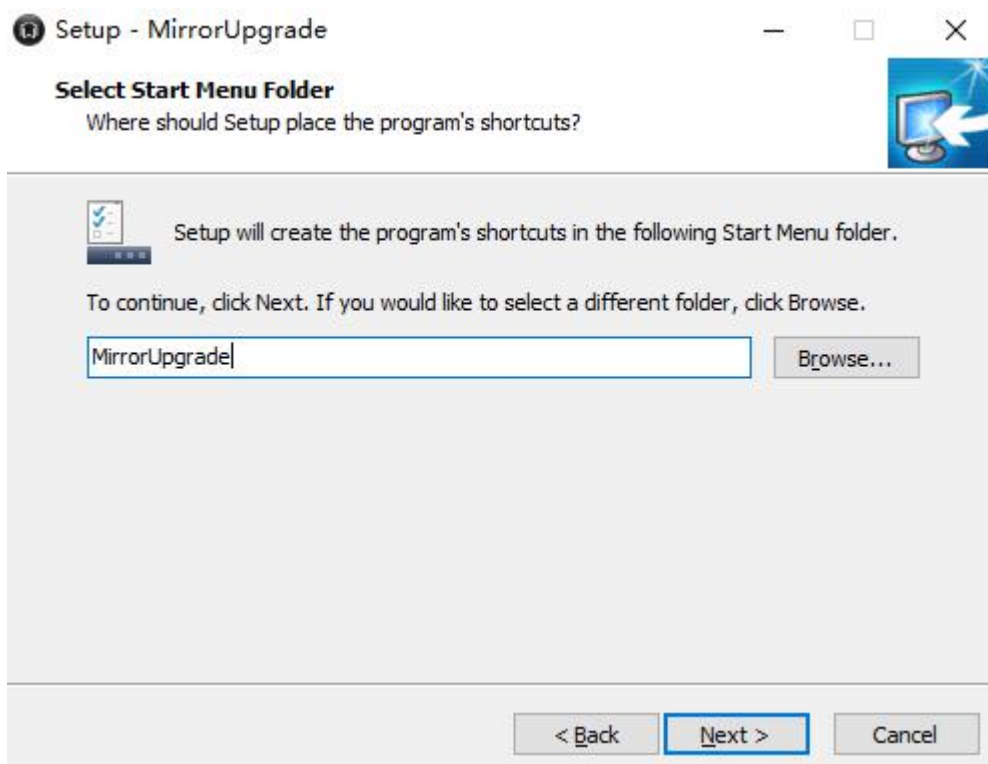
3



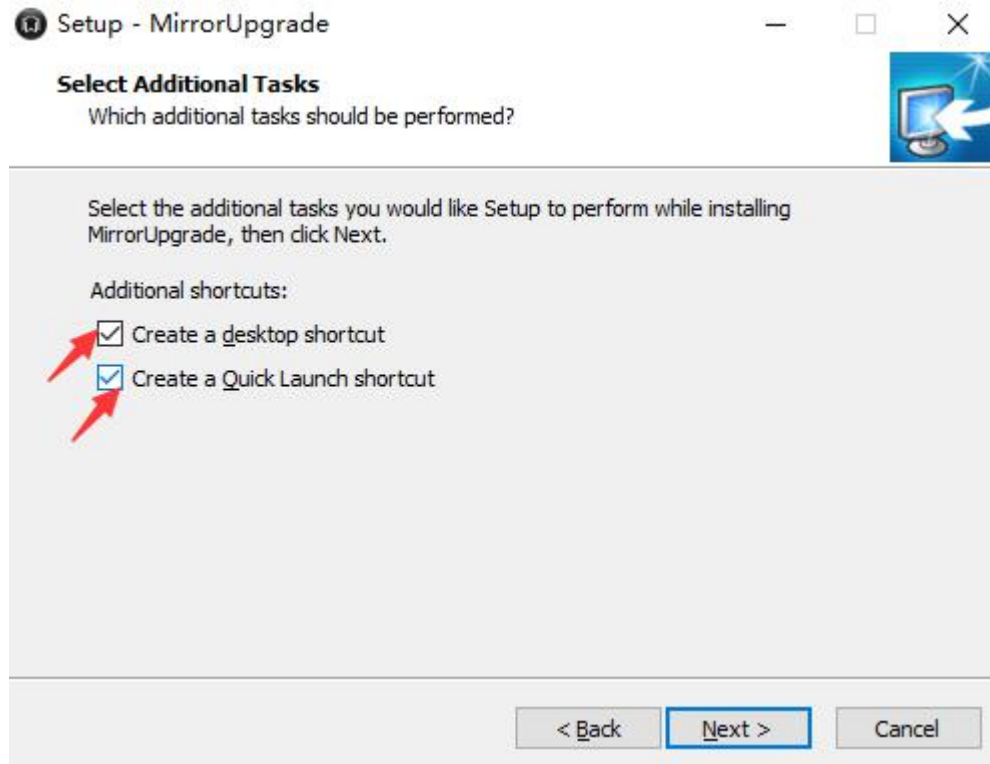
Select an installation folder, click **Next**.



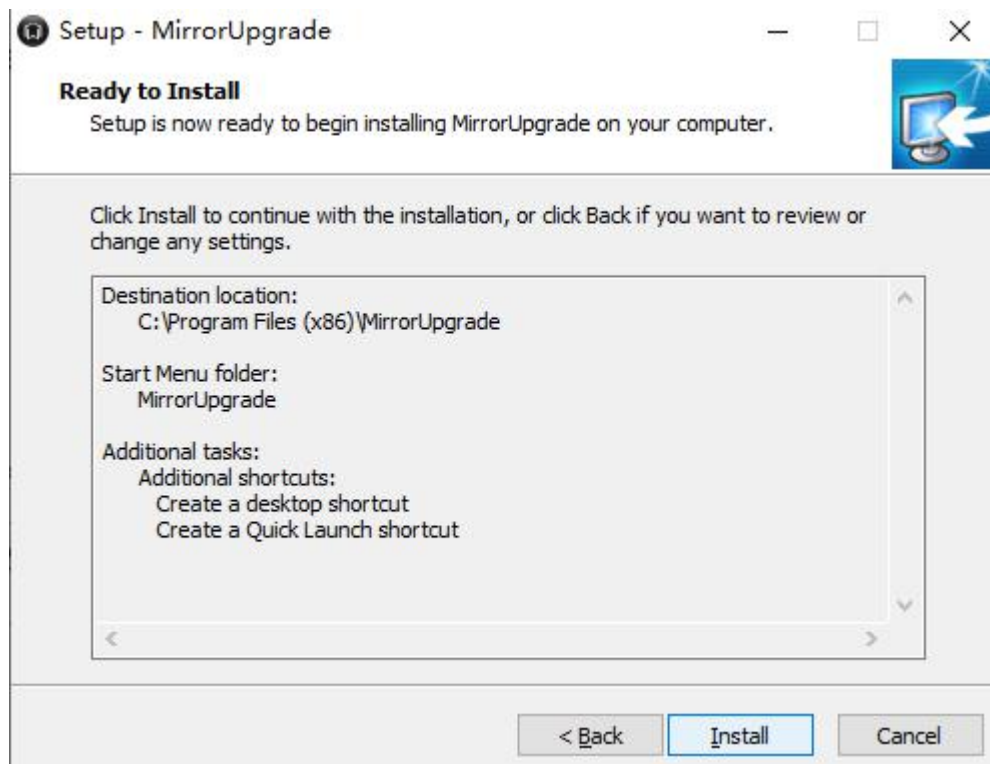
Select a start menu folder, click **Next**.



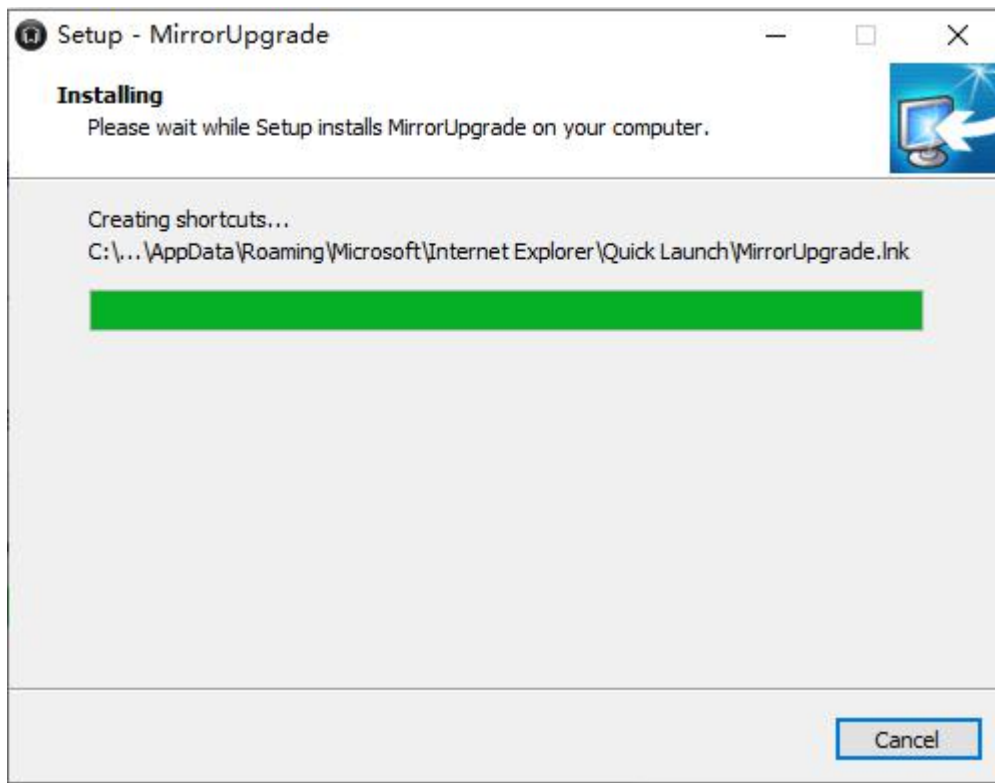
You can check Create Desktop Shortcut or Create Quick Launce Bar Shortcut, and then click **Next**.



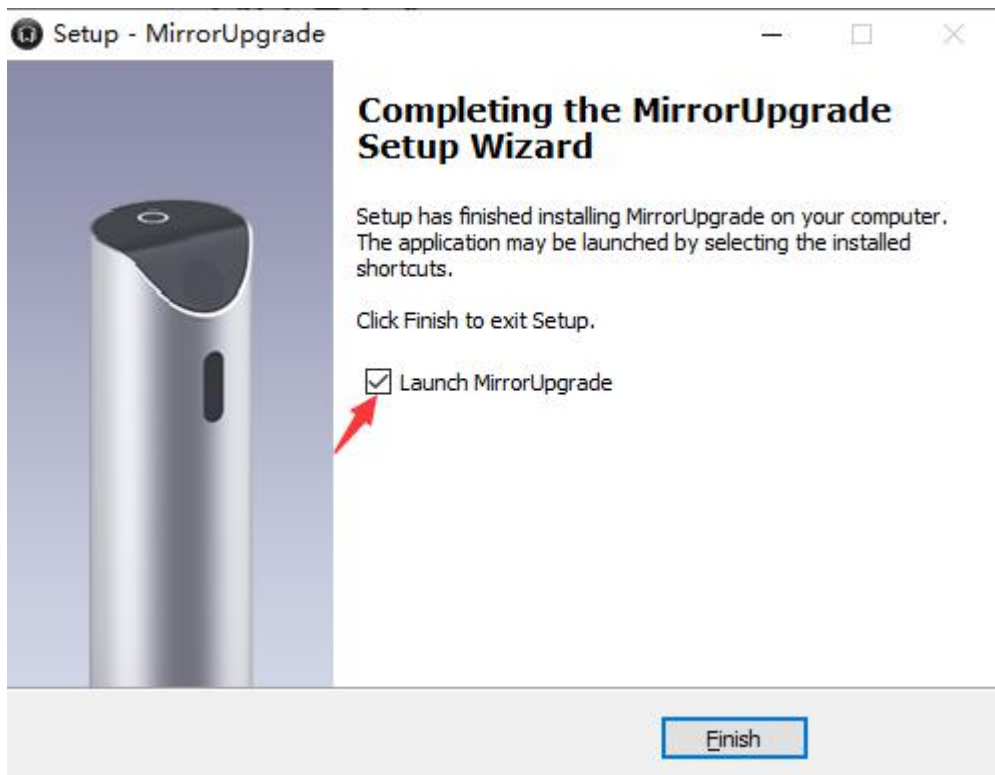
Click **Install** to start the installation.



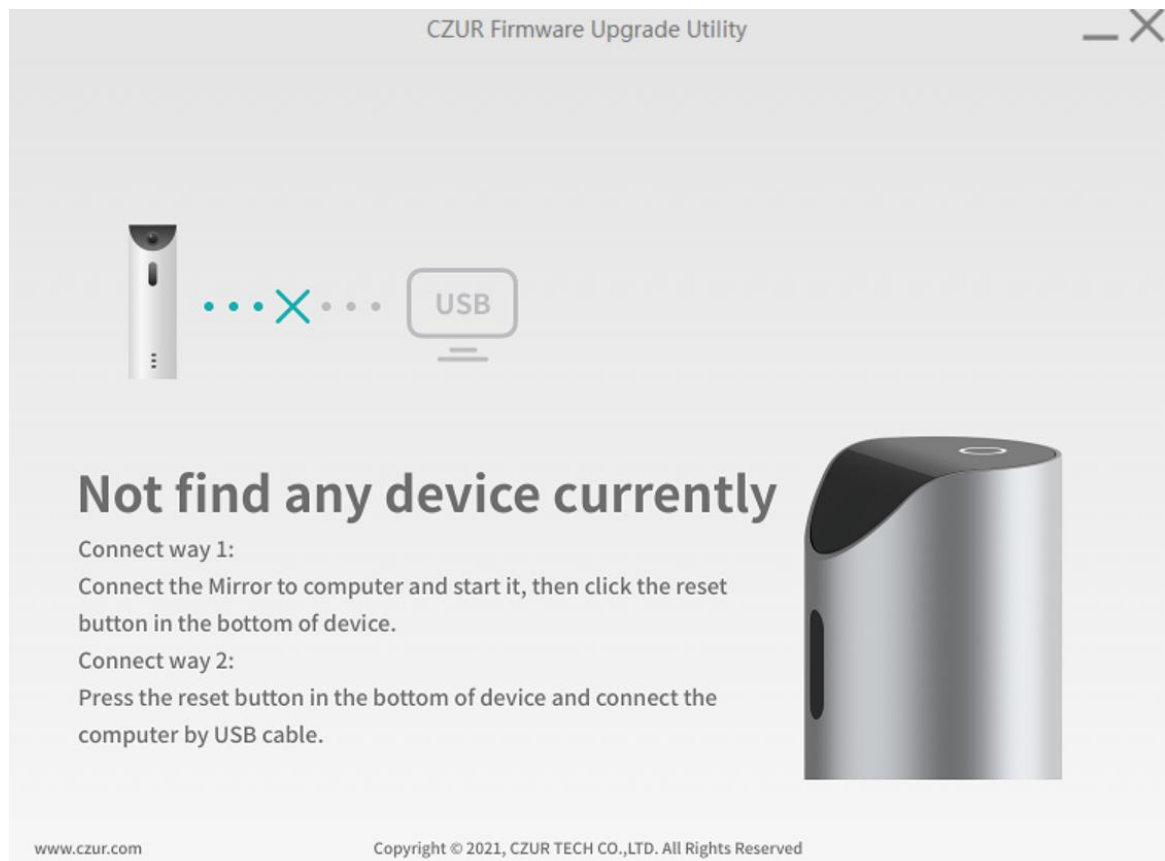
The software is being installed.



Check Run Mirror Upgrade and click **Finish** to run the software.



The operation interface appears as follows when the installation is finished.



3. Firmware Upgrade

Method 1: Connect the device to a PC. When the device is turned on, press the RESET button at the bottom of the device with a paper clip. The device will remind you that the firmware upgrade is in progress, and the Bluetooth is about to disconnect.

CZUR Firmware Upgrade Utility

Not find any device currently

Connect way 1:
Connect the Mirror to computer and start it, then click the reset button in the bottom of device.

Connect way 2:
Press the reset button in the bottom of device and connect the computer by USB cable.

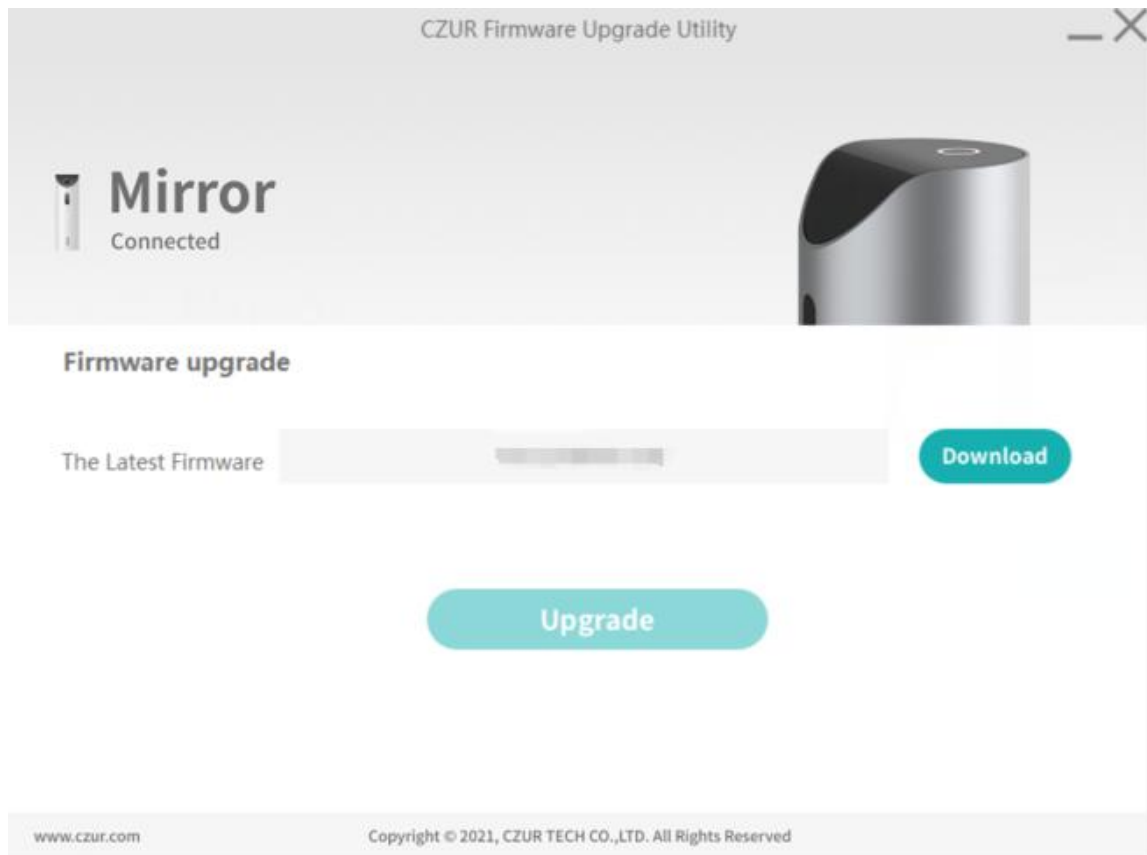
www.czur.com

Copyright © 2021, CZUR TECH CO.,LTD. All Rights Reserved

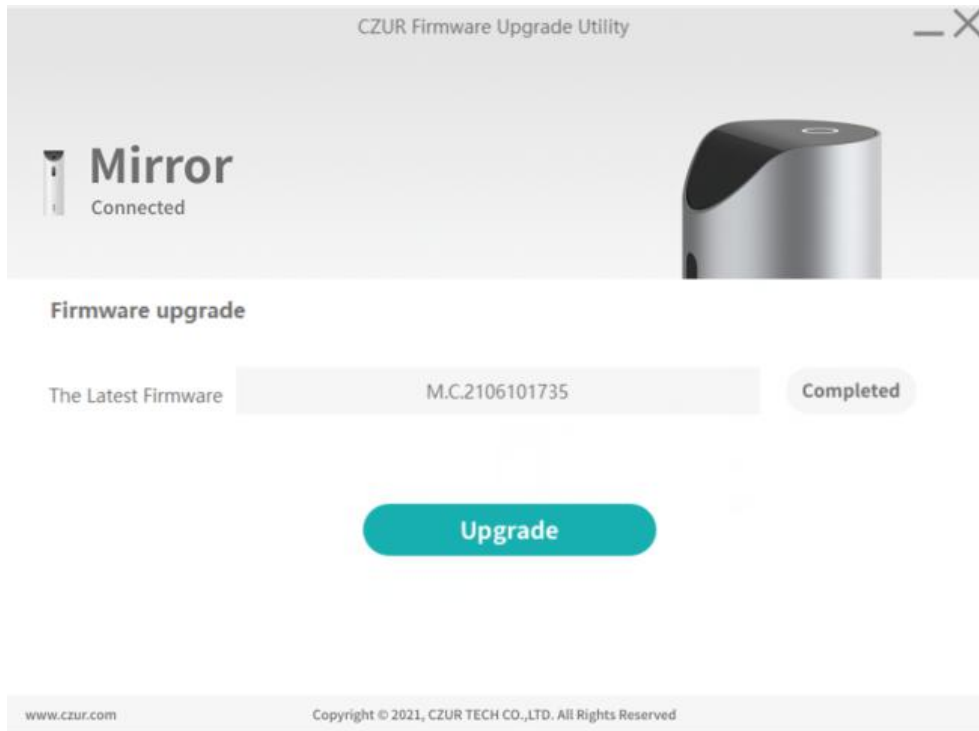
Try method 2 if method 1 does not work.

Method 2: Press and hold the RESET button at the bottom of the device and connect the USB cable to the PC.

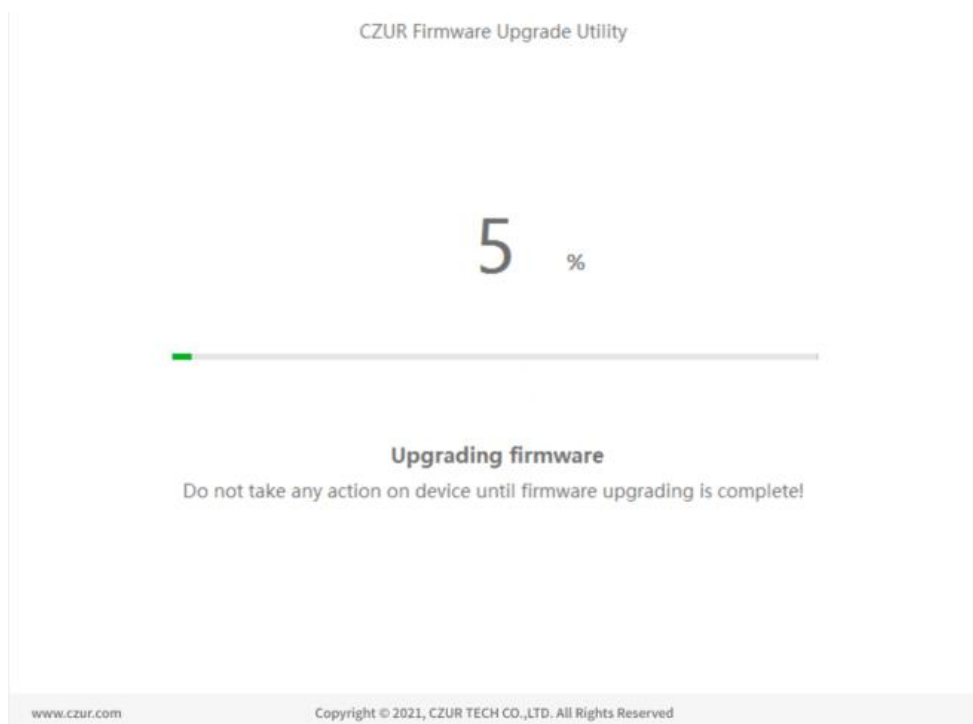
When the updated firmware version is detected successfully, click **Download**.



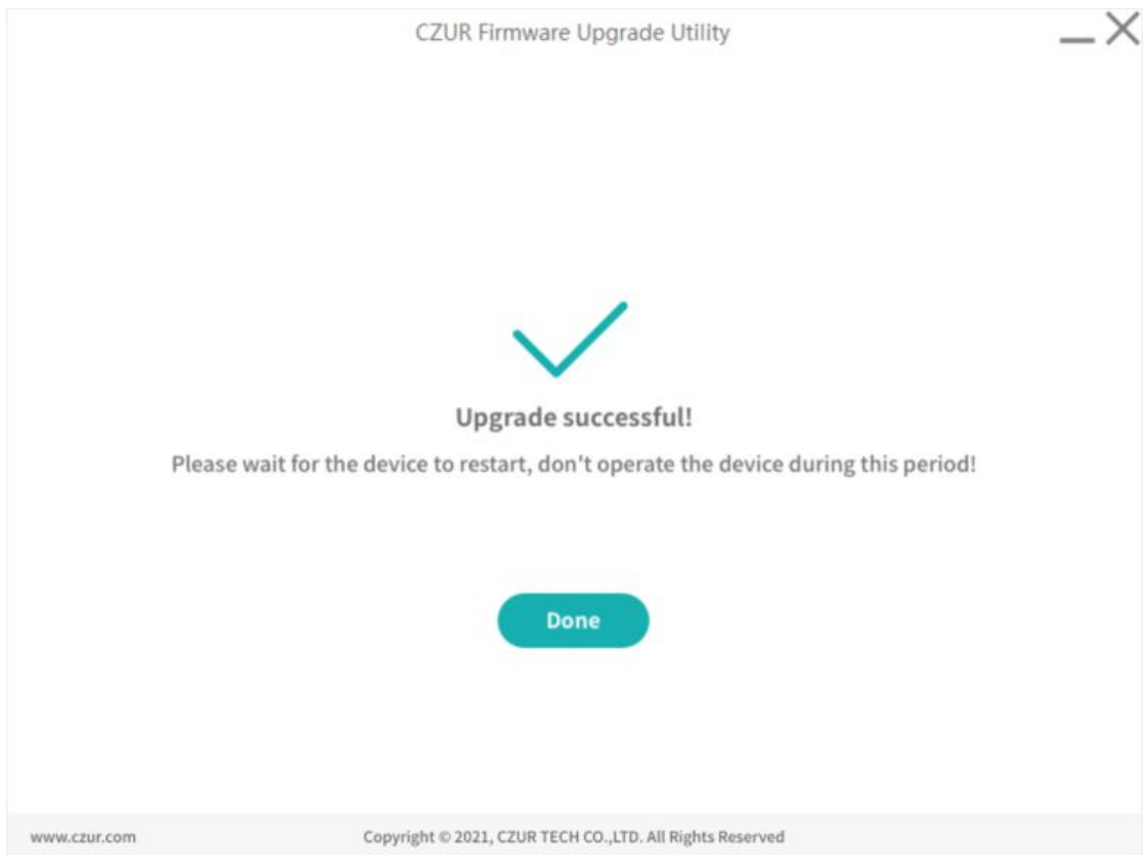
When the version is downloaded successfully, click **Upgrade**.



When the firmware upgrade is in process, do not operate the device or turn off the device.

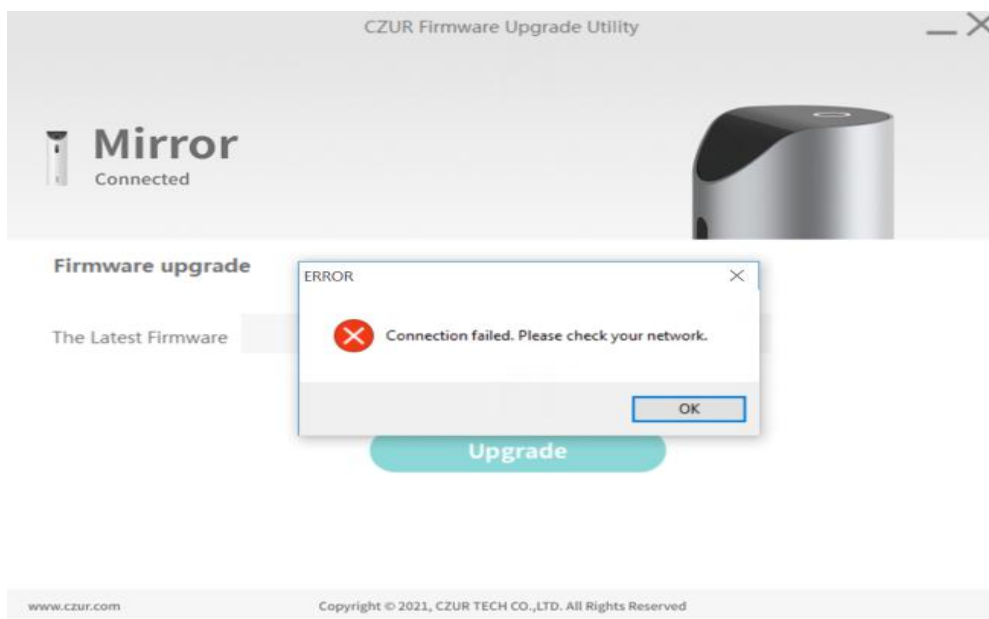


When the upgrade is done and the device restarted successfully, the device will prompt you: Let's begin with a good posture. Sit up straight, raise your head, and retract your chin! Upgraded successfully; smart/custom sitting posture mode; upgraded successfully, click "**Finish**".



Part III FAQ

1. What can I do when the prompt "Connection failed. Please check the network" appears?
 - a. There is no network currently. Connect the device to another available network.
 - b. The network is not stable. Click the refresh button as indicated by the arrow in the figure.

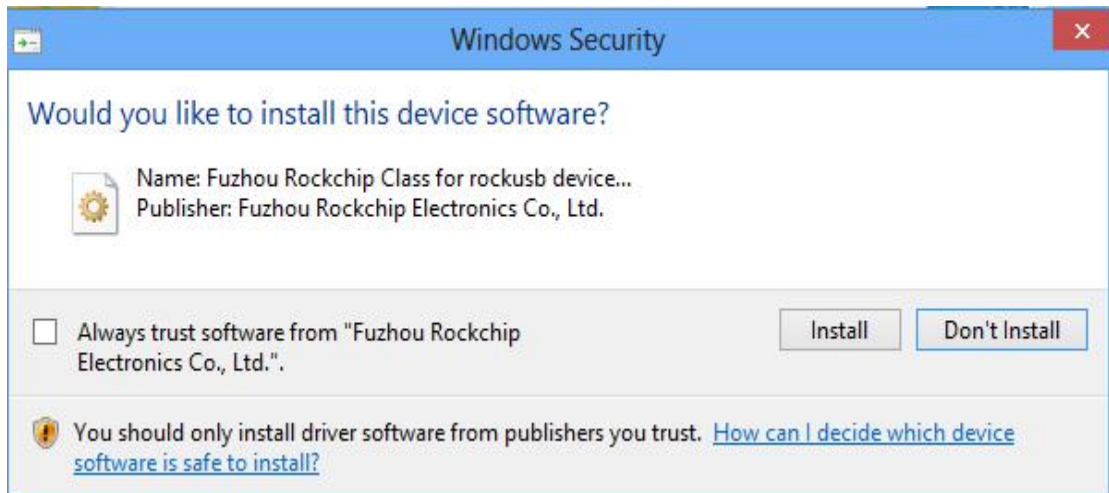


2. What should I pay attention to when I upgrade the firmware with method 2?

If the indicator of the device is off but the upgrade tool can detect the new version, the download and upgrade will not be affected. You can proceed with the download and upgrade of firmware, and then wait for the device to restart.

3. What should I pay attention to when I install the tool?

If the Windows Security prompt box pops up, click **Install**. Do not stop the installation when the message "Installing device driver software" pops up in the lower right corner of the computer taskbar.



CZUR TECH CO., LTD.

Website: <http://www.czur.com>

E-mail: support@czur.com

Skype: [support@czur.com](https://www.skype.com/people/support@czur.com)

9F, North Wing, West Block, PKU-HKUST ShenZhen-HongKong Institution,
Gaoxin South 7th Road, Nanshan District, Shenzhen, China
Room1001,10th Floor, Block A, No.32A Huoju Road, High-tech Industrial
Zone, Dalian City, Liaoning Province, China